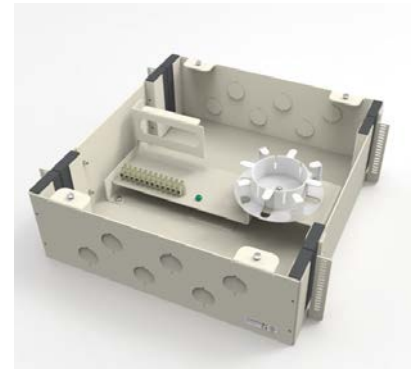


Powered Fiber Cable Plenum Transition Box

For many cable installations it is necessary to transition from an indoor to an outdoor environment. CommScope Powered Fiber Cable solutions now provide a plenum rated transition box specially designed to accommodate our hybrid copper and fiber cables and cleanly move to the outside space to support campus end-devices such as cameras, Wi-Fi access points, security and other devices requiring low voltage power and data. Additionally, the transition box allows a termination point for powered fiber permanent link cables which can later be utilized as needed for both indoor and outdoor end-devices.



- Provides easy and secure transition point for indoor to outdoor powered fiber cables
- Simple and reliable termination preserving full integrity of the channel performance
- Termination point for permanent link powered fiber cables for future applications
- Plenum rated enclosure
- Interface features: (6) fiber LC duplex, (6) 2-wire terminals
- Surface mounted
- Weight: 14 lbs (6.35 kg)
- 4.370 in (111 mm) x 14.173 in (360 mm) x 14.567 in (370 mm)

General Availability: January 2022

Ordering Information:

Material ID	Product Number	Description
760250853	PFB-TB-LGY	Powered fiber cable, Transition Box, Plenum rated, light gray