



# Cable Exchange

## Product Portfolio - Brochure

Cable Exchange (CEX) is the quick turn assembly house for all your fiber and copper cable assemblies. We provide a multitude of standard and customized networking solutions utilizing various cable types, connector configurations, color, and length options.

From our beginnings as a family-owned business in 1986, CEX has been providing networking cables to many different enterprise customers. Our strengths are in quick-turn and customization.

Since joining CommScope in 2017, we have expanded these capabilities and have become strategic partner to hyperscale, broadband, and enterprise customers. We have manufacturing facilities on the East and West Coast.

For more information, call us Monday-Friday, 5am-5pm (PST) at (800) 422-2539, or email us at [CEX-Sales@CommScope.com](mailto:CEX-Sales@CommScope.com).

SUBJECT TO COMMScope LIMITED PRODUCT WARRANTY: <https://www.commscope.com/globalassets/digizuite/2847-limited-product-warranty.pdf>

# Table of Contents

FIBER PATCH  
CABLES

p3

DISTRIBUTION  
FIBER TRUNKS

SUB-UNITIZED  
FIBER TRUNKS

p4

MICRO-CORE  
FIBER TRUNKS

p5

COPPER PATCH  
CABLES

p6

CUSTOM

p7

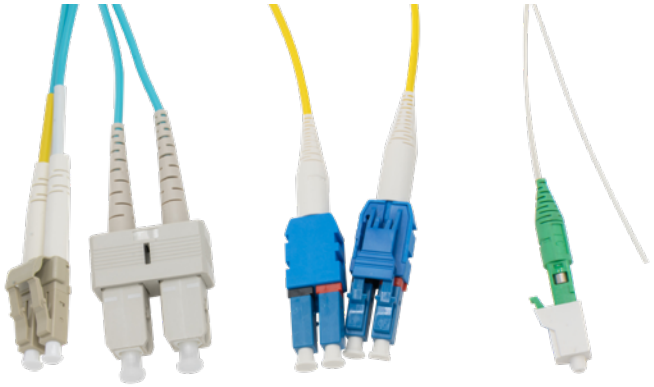
p8

# FIBER PATCH CABLES

Pictured: CEX-LCSCOM4D-006F, CEX-LULUSMD-006F, CEX-L1XXSMS-006F

## Fiber Patch Cables

CEX Fiber Patch Cables give you a reliable connection with standard 2.0mm Zip or Round cordage. With a variety of connector options including LC Uniboosts of Field-Reversible Polarity and legacy MTRJ options, this family will fit all your patching needs.

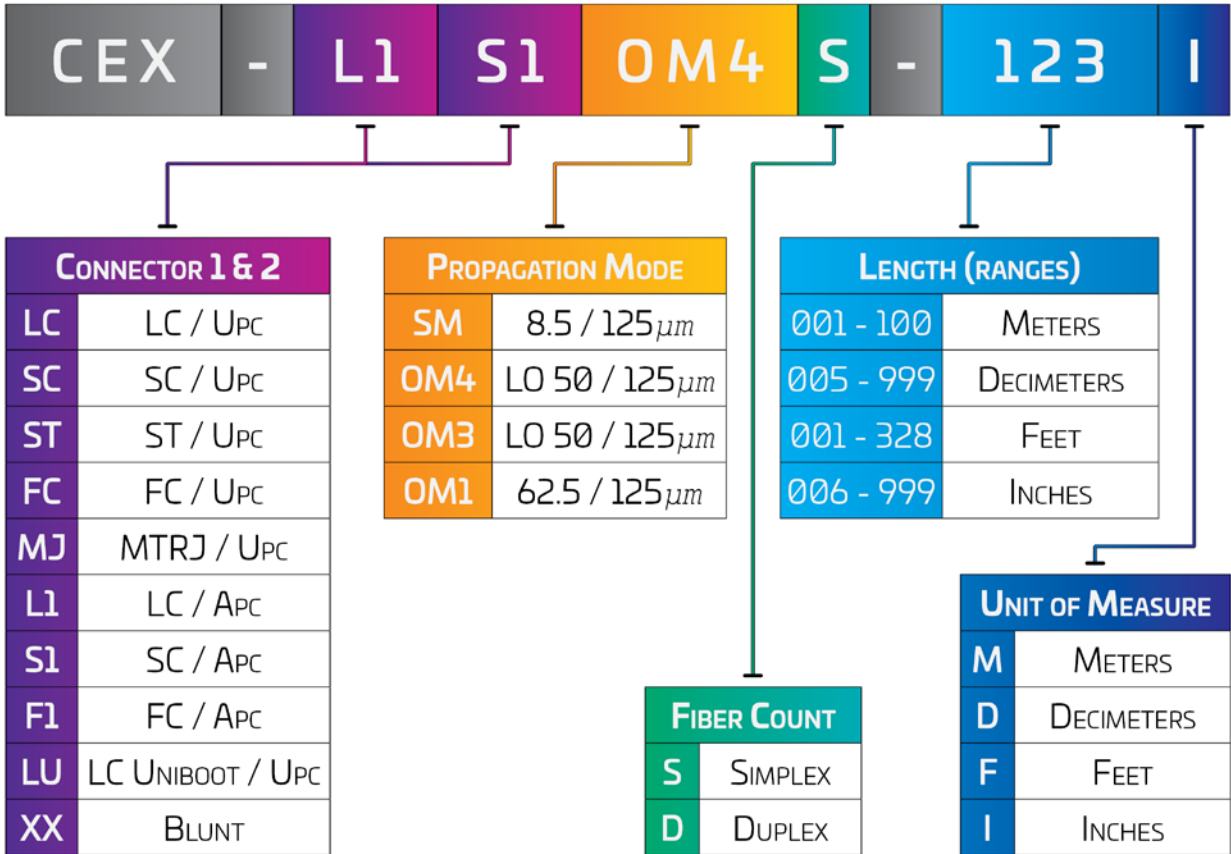


### 2.0mm Plenum-rated (OFNP)

- Simplex (1 Fiber)
- Duplex (2 Fiber Zip | 2 Fiber Round)

### TIA-598-C Industry Color Coding Standards

- Yellow (SM)
- Aqua (OM4 | OM3)
- Orange (OM1)



# Sub-unitized Fiber Trunks

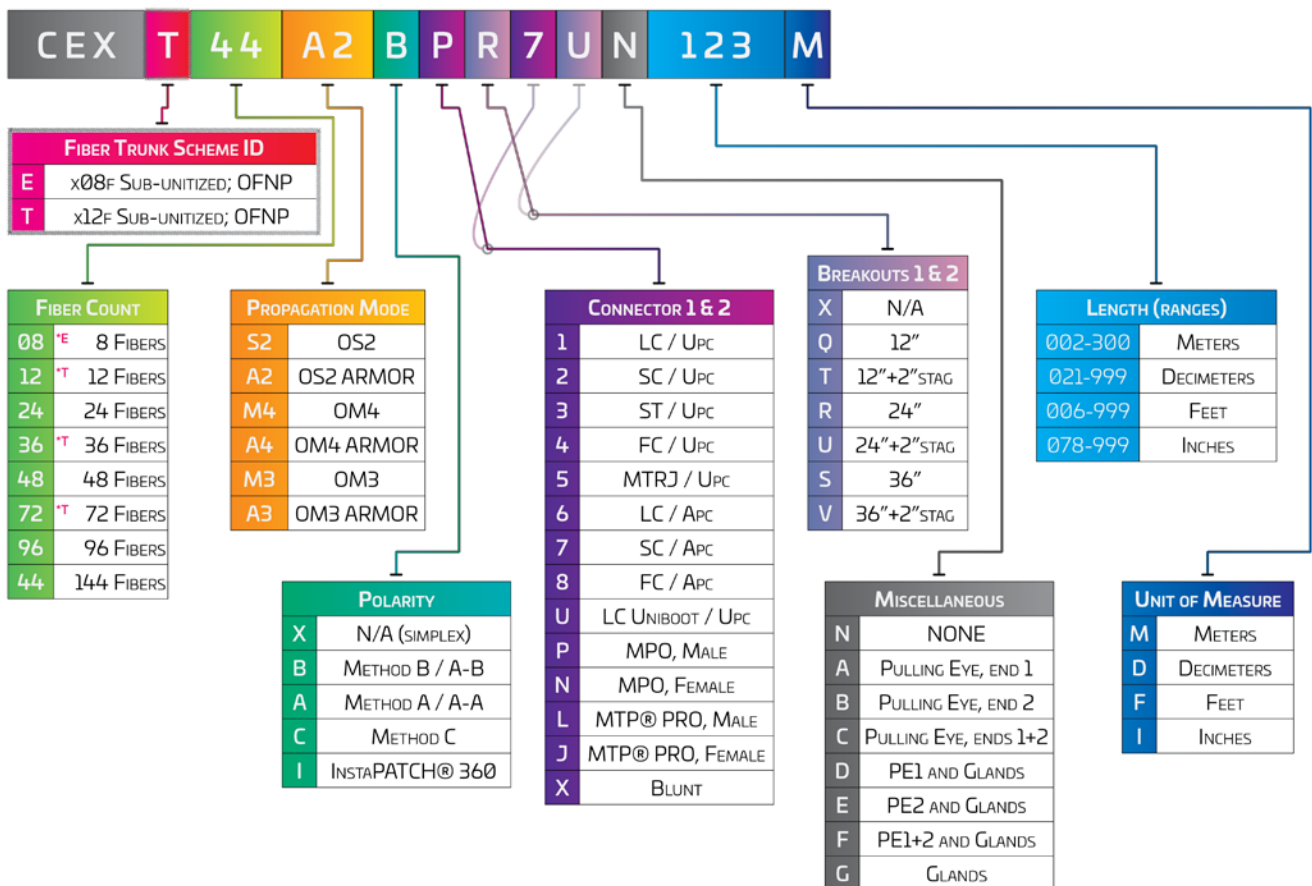
CEX Sub-unitized Fiber Trunks are our top of the line product set. Ranging from 08F up to 144F using the latest 2.0mm Sub-unit diameter, it does not only provide high density with the smallest possible diameter, but also flexibility to double stagger and line up to your rack and panel layout.

### Plenum-rated (OFNP)

- 250micron; 2.0mm<sup>1</sup> Sub-units: 8 Fiber or 12 Fiber
- LC Uniboosts of Field-Reversible Polarity
- MTP® PROs of Field-Reversible Polarity

### TIA-598-C Industry Color Coding Standards

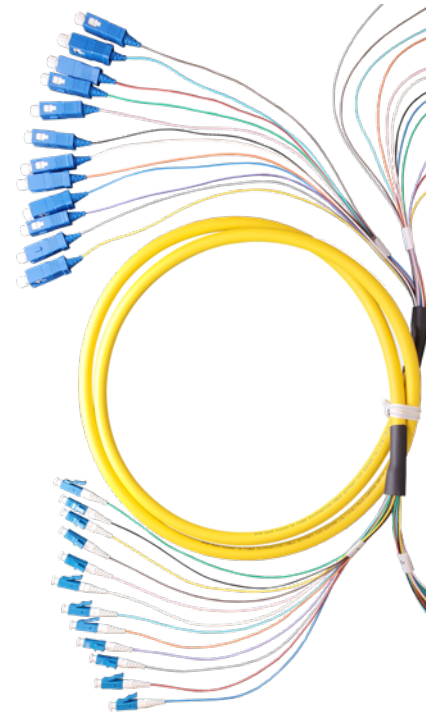
- Yellow (OS2)
- Aqua (OM4 | OM3)
- Colored Breakouts Every 8 or 12 Fibers



i. subject to availability -- 3.0mm diameter may be used in lieu of 2.0mm sub-units

# Distribution Fiber Trunks

CEX Distribution Fiber Trunks are built around 900micron tight buffer, enabling direct colored fanout and single fiber termination without over-tubing. These trunks are ideal for in-tray / in-box direct patching where 2.0mm furcation creates space constraints.

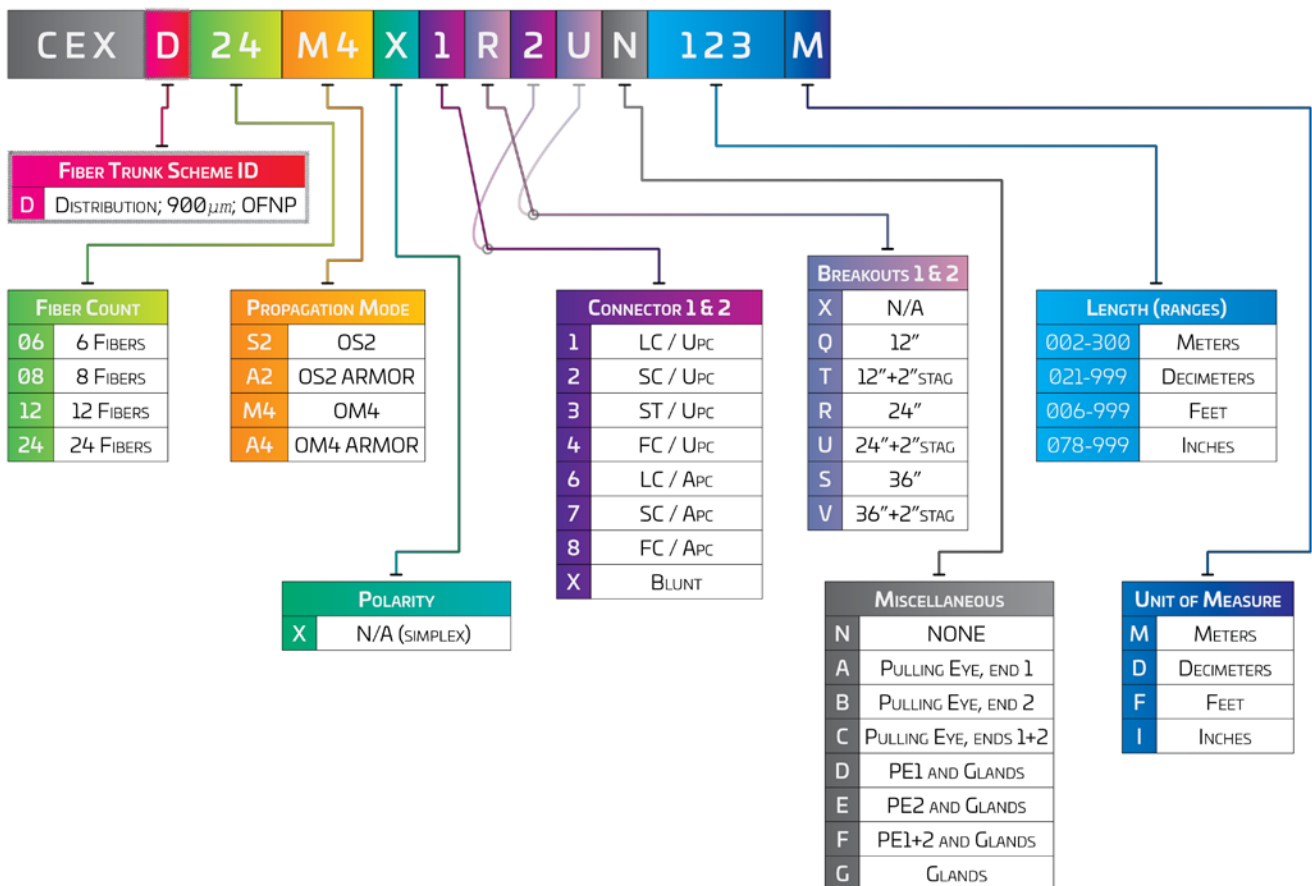


## Plenum-rated (OFNP)

- 900micron; Tight-Buffer
- Only Simplex Connectors Available

## TIA-598-C Industry Color Coding Standards

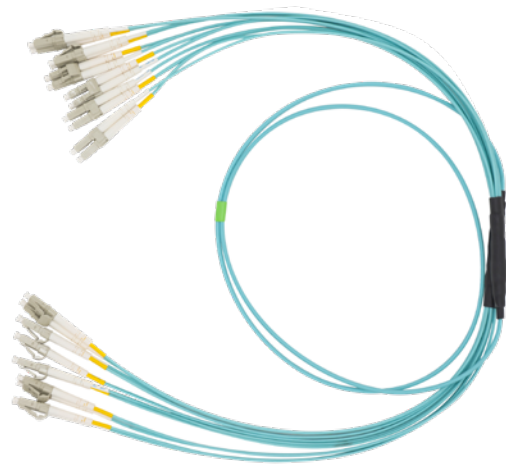
- Yellow (OS2)
- Aqua (OM4)
- Colored Breakouts Every 12 Fibers





# Micro-core Fiber Trunks

CEX Micro-core Fiber Trunks are a special solution when ducting space is of the highest concern. Using 250micron stacked fiber, excluding sub-units, it enables smaller overall diameters in the core cable. (See Sub-unitized Fiber Trunks for double-staggering and multi-fiber connectors).

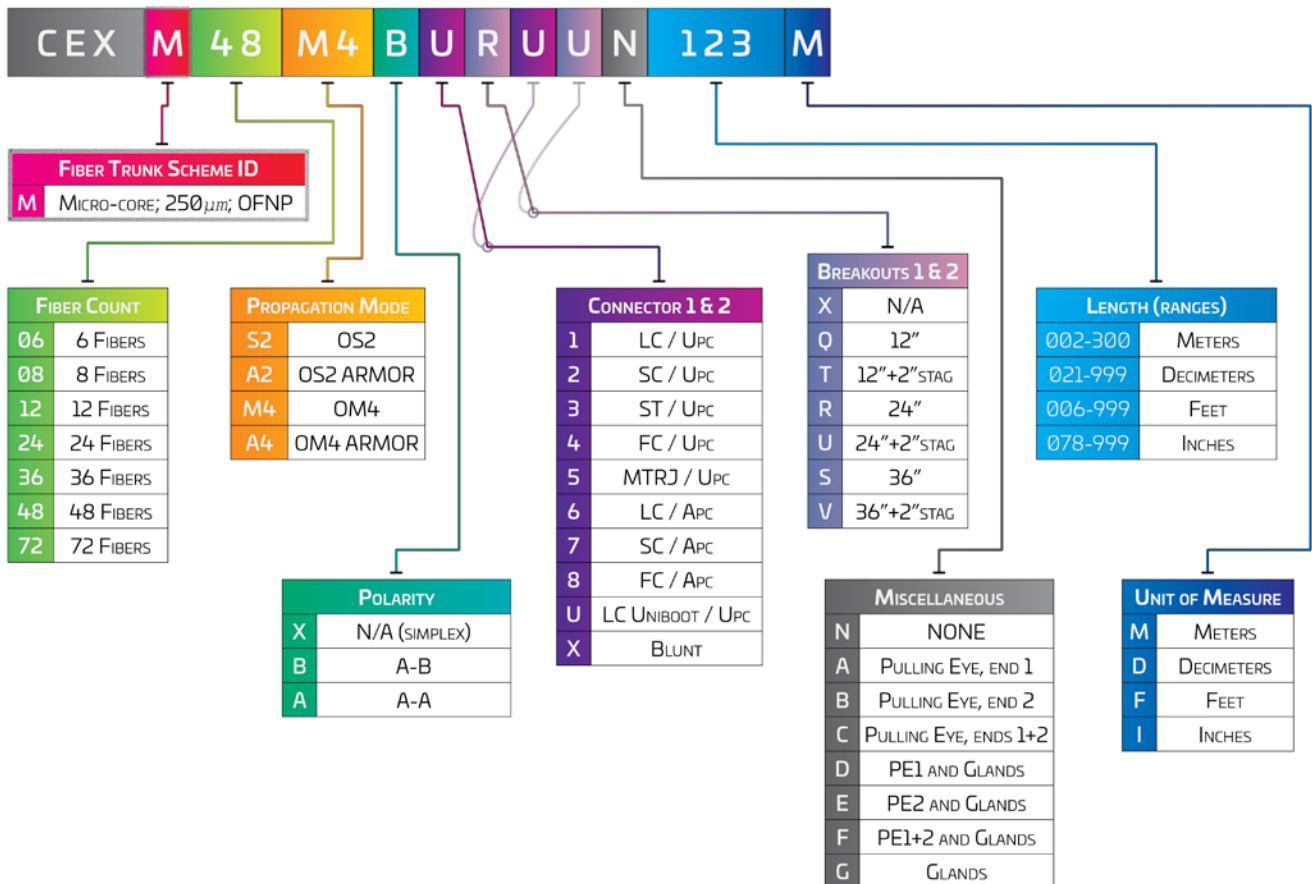


## Plenum-rated (OFNP)

- 250micron
- Simplex and Duplex Connectors Available
- LC Uniboosts of Field-Reversible Polarity

## TIA-598-C Industry Color Coding Standards

- Yellow (OS2)
- Aqua (OM4)
- Colored Breakouts Every 12 Fibers



## COPPER PATCH CABLES

Pictured: CEXC6V8F1B-C\_006F (BK, WH, GY, BU, YE, GN)

# Copper Patch Cables

CEX Copper Patch Cables give you affordable and reliable networking. With many different cable color and gauge options<sup>i</sup>, this product family will fit the vast majority of your data connectivity needs.



### CAT5e, CAT6, or CAT6a

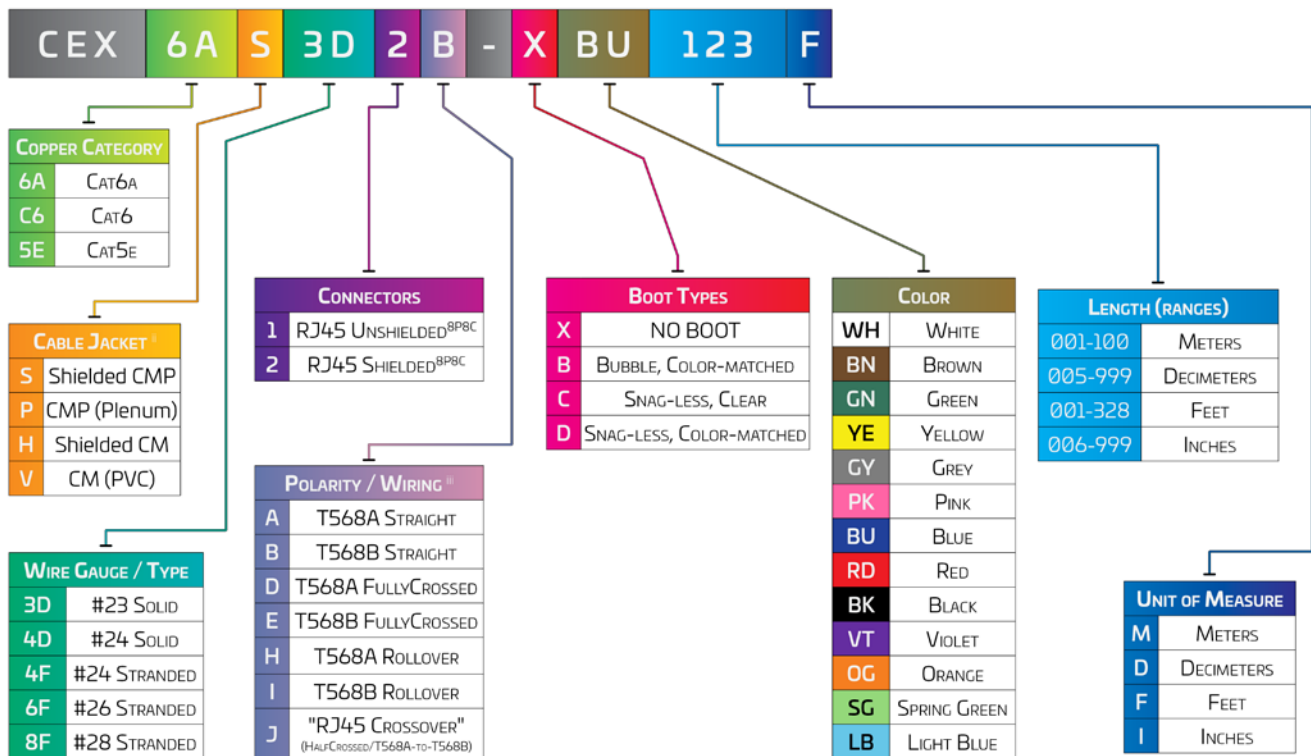
- 23 AWG (Solid), 24 AWG (Solid or Stranded), 26 & 28 AWG (Stranded)

### RJ45 Shielded or Unshielded

- 8-pin, 8-connector (8P8C)

### 28 AWG Stranded Tinned Copper up to 50 meters

- 68% the size of standard CAT6
- 48% smaller cross sectional area
- Improved Cable Density



i. subject to availability -- color options may vary depending on other component selections  
 ii. 'S', 'H' -- overall foil shielding (F/UTP) or better  
 iii. wiring diagrams available upon request

## Need Custom Cables?

Cable Exchange has made it easier and quicker to design custom assemblies to fit your exact specifications. You can rely on us to provide innovative custom configurations for a variety of fiber and copper solutions. CEX Custom Cable Bundling and Labelling Solutions are examples of where we can maximize value and quality for our customers.

***Guided by our in-house engineering teams, we create a solution that fits your cabinet, rack, or panel layout such that your installation speed and quality is lifted to the next level***

- Engineering-supported designs and assembly drawings
- Prototype samples for field verification
- CEX Custom Outer Diameter up-jacketing, Breakouts and Labelling, Coloring, and Cable Bundling Solutions







*For more information, call us  
Monday-Friday, 5am-5pm (PST) at:*

*(800) 422-2539*

*or email us at:*

*[CEX-Sales@CommScope.com](mailto:CEX-Sales@CommScope.com)*